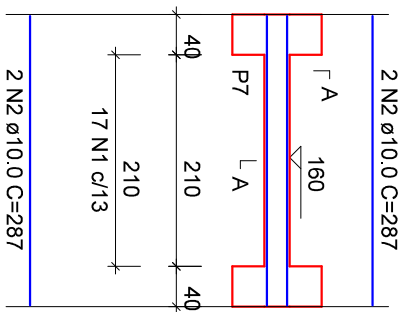


# Armação positiva da escada E1

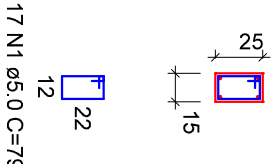
## VE-1

ESC 1:75



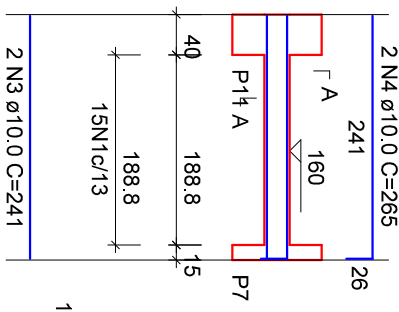
### SEÇÃO A-A

ESC 1:40



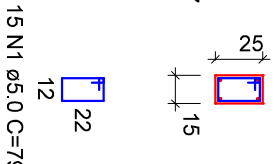
## VE-2

ESC 1:75



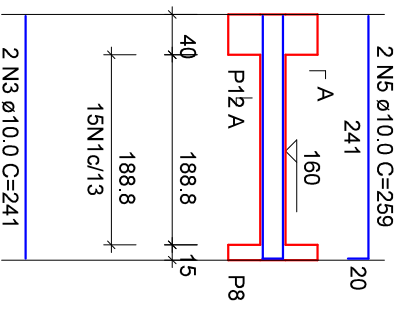
### SEÇÃO A-A

ESC 1:40



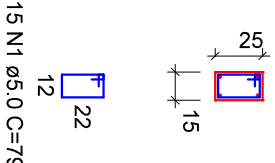
## VE-3

ESC 1:75



### SEÇÃO A-A

ESC 1:40



RELAÇÃO DO AÇO

AÇO	N	DIAM (mm)	QUANT	C.UNIT (cm)	C.TOTAL (cm)
CA50	1	8,0	34	146	4964
	2	10,0	7	287	2009
	3	10,0	7	157	1099
	4	10,0	9	499	4491
	5	10,0	10	437	4370

### RESUMO DO AÇO

AÇO	DIAM (mm)	C.TOTAL (m)	PESO + 10% (kg)
CA50	8,0	49,6	21,5
CA50	10,0	119,7	81,2
<b>PESO TOTAL (kg)</b>			<b>102,7</b>

Volume de concreto (C-25) = 2,06 m³  
Área de forma = 20,19 m²

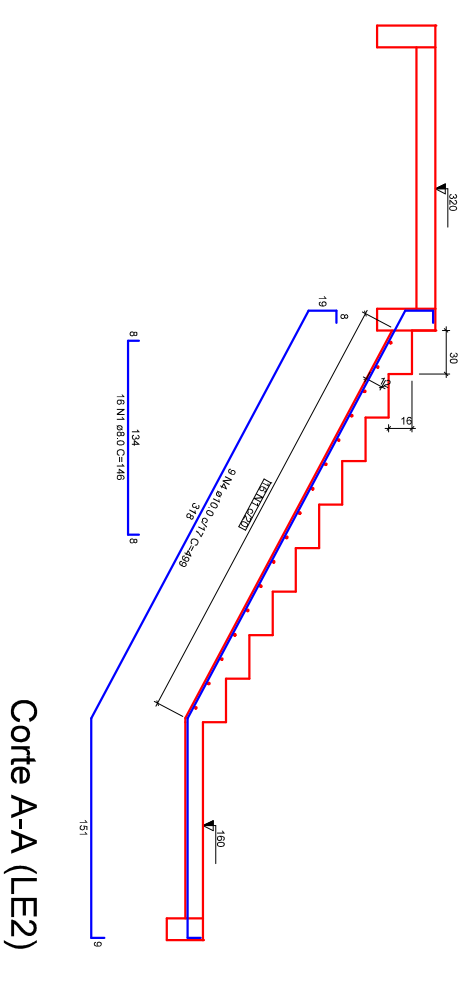
RELAÇÃO DO AÇO

AÇO	N	DIAM (mm)	QUANT	C.UNIT (cm)	C.TOTAL (cm)
CA60	1	5,0	47	79	3713
	2	10,0	4	287	1148
	3	10,0	4	241	964
	4	10,0	2	265	530
	5	10,0	2	259	518

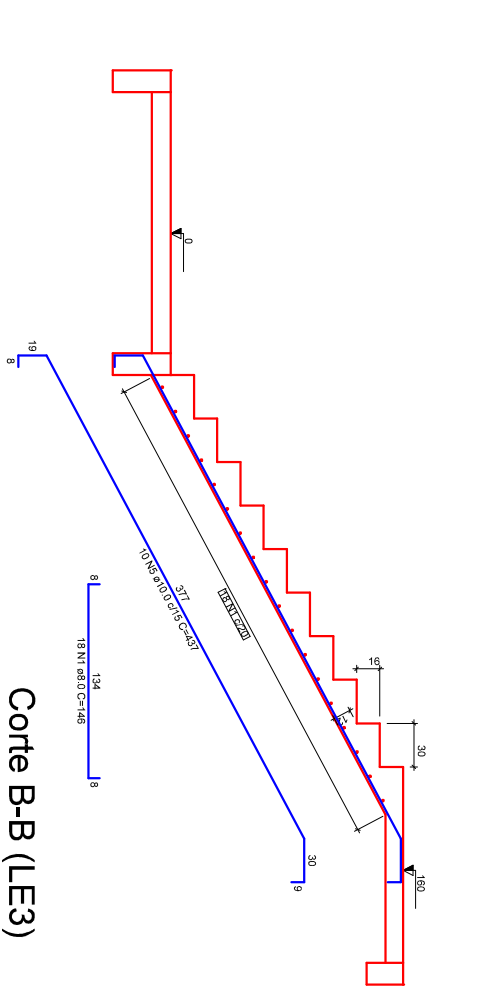
### RESUMO DO AÇO

AÇO	DIAM (mm)	C.TOTAL (m)	PESO + 10% (kg)
CA50	10,0	31,6	21,4
CA60	5,0	37,1	6,3
<b>PESO TOTAL (kg)</b>			<b>27,7</b>

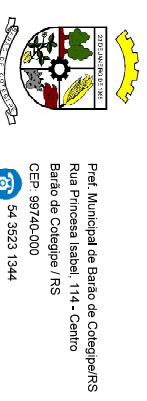
Volume de concreto (C-25) = 0,29 m³  
Área de forma = 5,05 m²



## Corte A-A (LE2)



## Corte B-B (LE3)



Prof. Municipal de Barão de Cotegipe/RS  
Rua Princesa Isabel, 114 - Centro  
Barão de Cotegipe / RS  
CEP: 89740-000  
54 3523 1344

Prancha:  
**ESCADA**  
Data:  
11/2024

Proprietário(a):

MUNICÍPIO DE BARÃO DE COTEGIPE  
CNPJ: 87.613.451/0001-82

Endereço:  
Avenida Adão Welker, 650 - Parte do lote nº 05 - Barão de Cotegipe/RS

Responsável Técnico:

Luis Carlos Balestrin  
Eng. Civil CREA RS 096570-D

Desenho:  
Luis

Escala:  
INDICADA